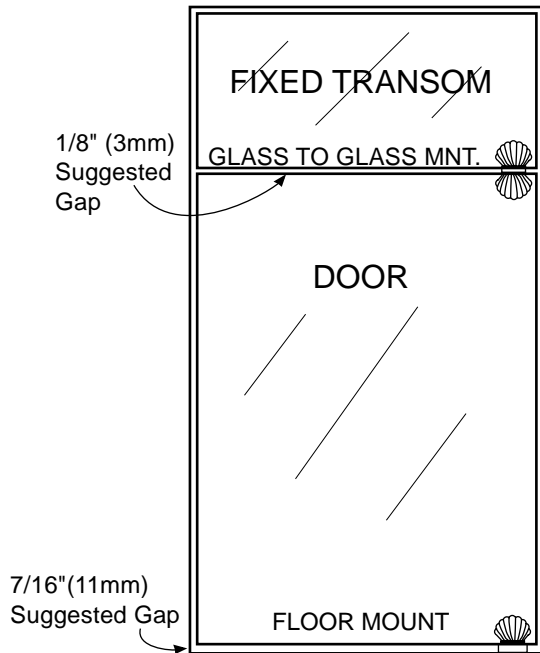
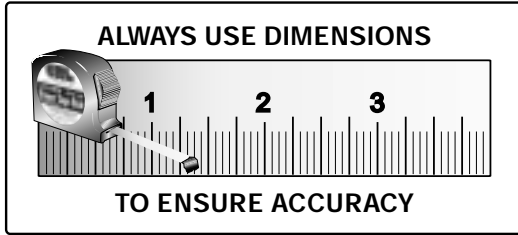




**C.R. LAURENCE CO., INC.**  
**PROFESSIONAL QUALITY**



# SHELL

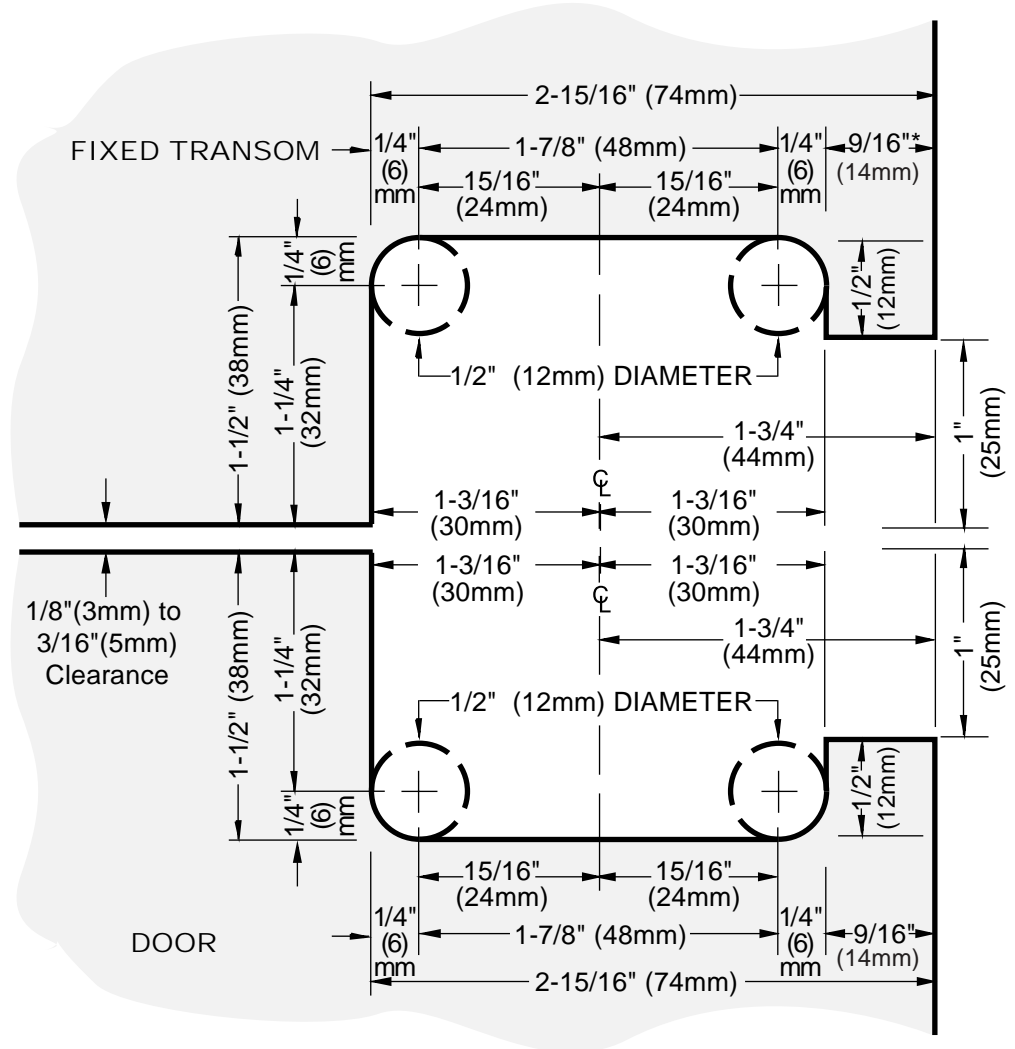
## Glass-to-Glass Hinge

### CAT No. SHE002

Edge Mount Alternate Method (1/8" (3mm) to 3/16" (5mm) Clearance)

### IMPORTANT:

Project measurements from the edge of the glass.



\* The 9/16" (14mm) measurement is ok as long as the fixed panel side clearance is the same as the door side clearance. If not, make the appropriate add-on or deduction.