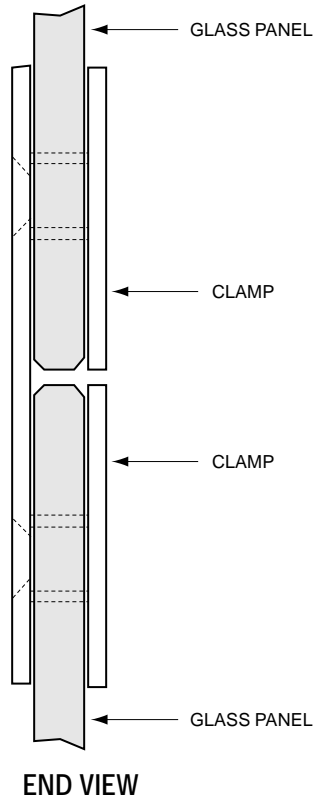




C.R. LAURENCE CO., INC.
PROFESSIONAL QUALITY

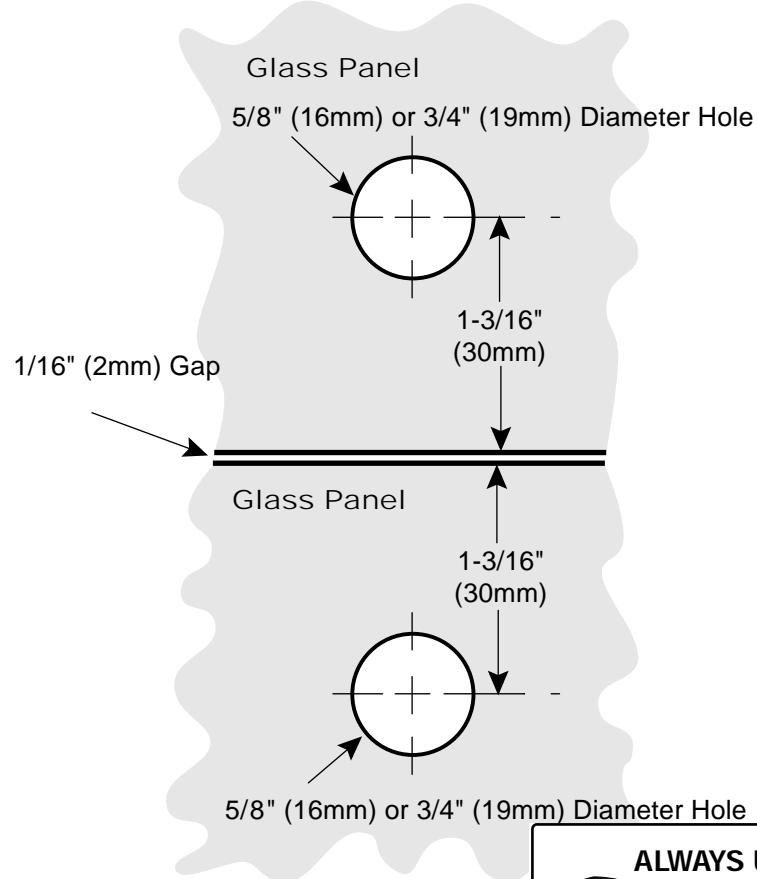
Note: The clamps shown on this page can also be used in a wall-to-glass "Y" inline application. For information on this see pages 4X-27 and 4X-28.

TYPICAL INSTALLATION



TEMPLATE FOR 180° GLASS-TO-GLASS APPLICATION

Important: Project measurements from the edge of glass.



GLASS CLAMPS

Cathedral Style 180° Glass Clamp for 5/16" (8mm) to 1/2" (12mm) (Split Face)

CAT. No. GCB280

Junior Cathedral Style 180° Glass Clamp for 1/4" (6mm) (Split Face)

CAT. No. GCB6280

